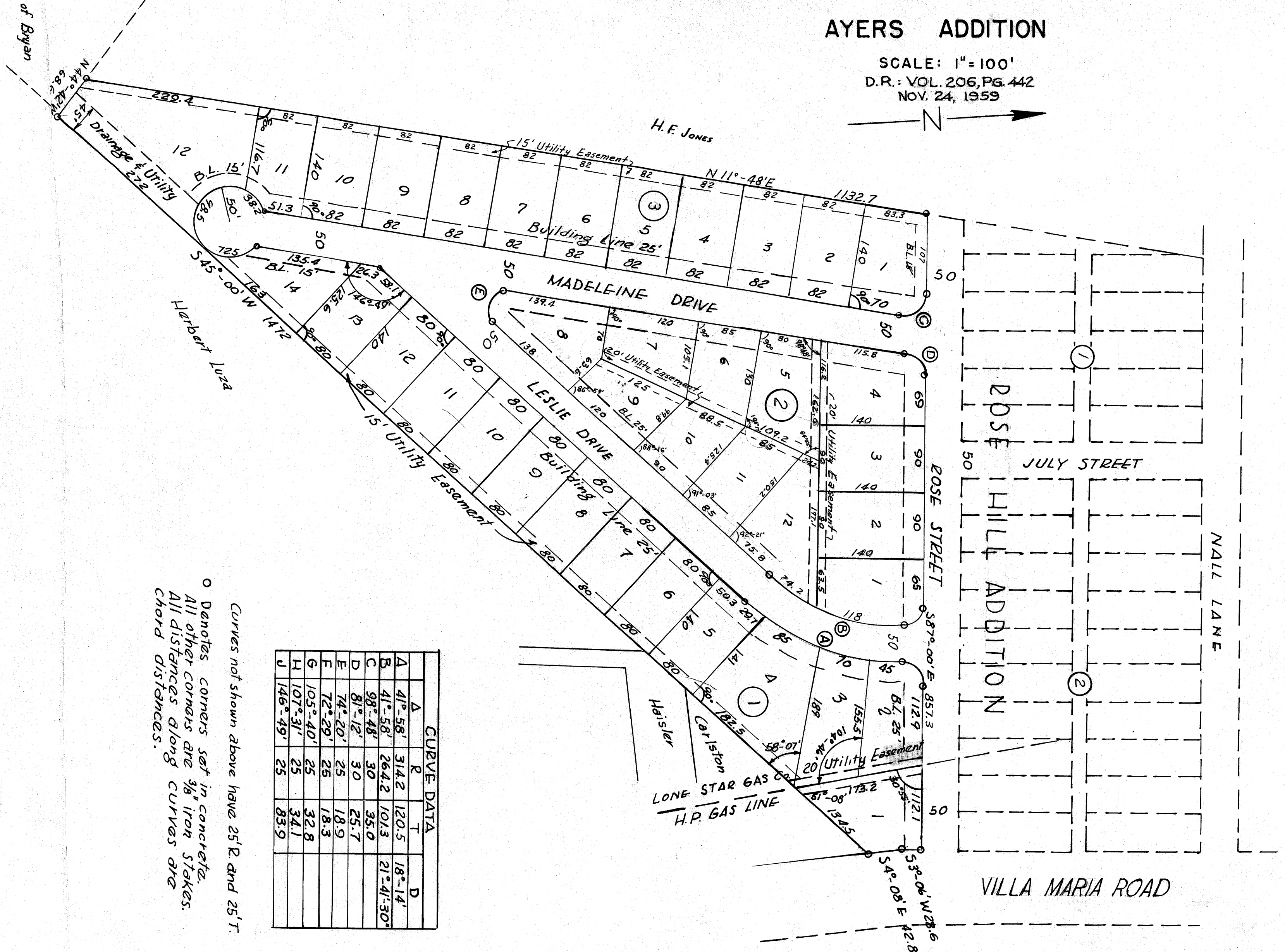
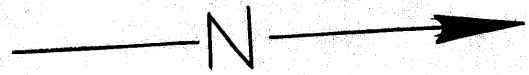


# AYERS ADDITION

SCALE: 1" = 100'  
 D.R. : VOL. 206, PG. 442  
 NOV. 24, 1959



CURVE DATA			
A	R	T	D
A	41°-58'	314.2	120.5
B	41°-58'	264.2	101.3
C	98°-48'	30	35.0
D	81°-12'	30	25.7
E	74°-20'	25	18.9
F	72°-29'	25	18.3
G	105°-40'	25	32.8
H	107°-31'	25	34.1
J	146°-49'	25	83.9

○ Denotes corners set in concrete.  
 All other corners are 3/8" iron stakes.  
 All distances along curves are chord distances.  
 Curves not shown above have 25' R. and 25' T.

on  
 0021175  
 Entered

11/24/59